

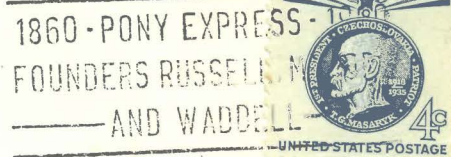
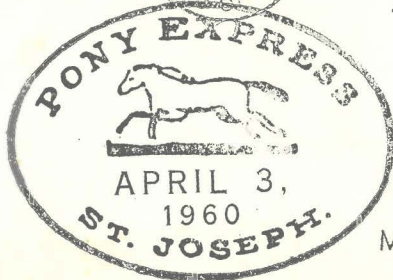
100th
ANNIVERSARY
OF THE
PONY EXPRESS



APRIL 3 1860 APRIL 3 1960
ST. JOSEPH, MO.
TO
SACRAMENTO, CALIF.

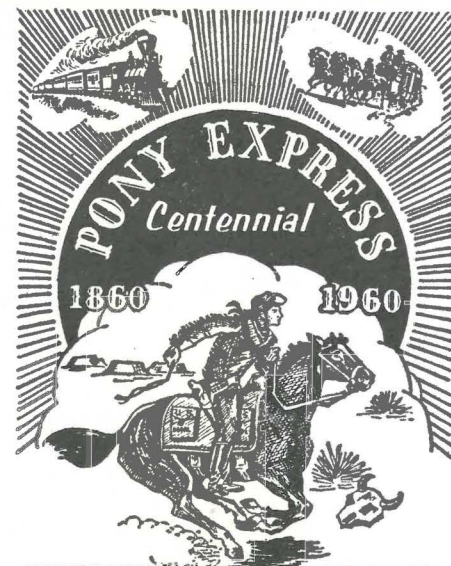


OFFICIAL COVER PONY EXPRESS
CENTENNIAL COMMITTEE



1860 - PONY EXPRESS -
FOUNDERS RUSSELL
AND WADDELL

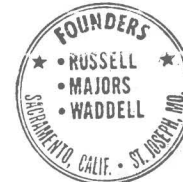
Mr. & Mrs. Elmer
Reynolds
Agency, Missouri



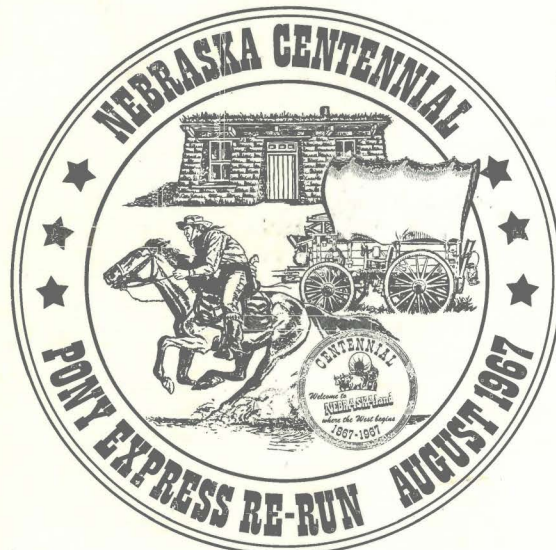
OFFICIAL FIRST DAY COVER
ST. JOSEPH STAMP COLLECTOR'S CLUB



FIRST DAY OF ISSUE



NEBRASKA STATEHOOD
1867-1967



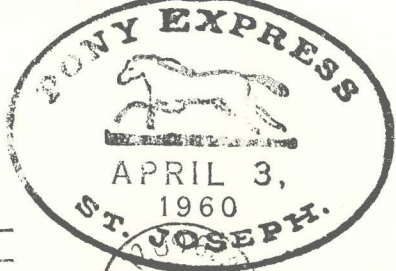
Ray E. Coy +
Don L. Reynolds
c/o
Pony Express Museum
St. Joseph
Mo.

100th
ANNIVERSARY
OF THE
PONY EXPRESS



APRIL 3 1860 APRIL 3 1960

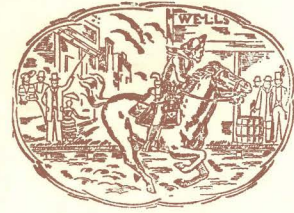
ST. JOSEPH, MO.
SACRAMENTO, CALIF.
1860-1960 PONY EXPRESS
OFFICIAL COVER PONY EXPRESS
CENTENNIAL COMMITTEE



ST. JOSEPH
MUSEUM
St. Joseph, Mo.

Central Overland Pony Express

October 26, 1961



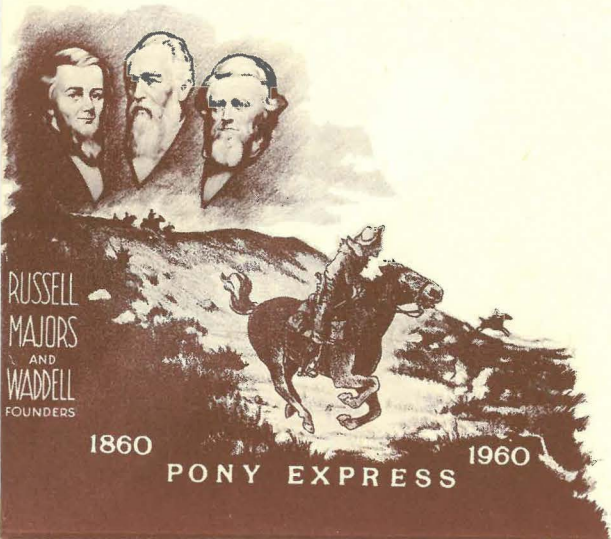
CENTENNIAL
of COMPLETION

AT
PLACERVILLE (OLD HANGTOWN) CALIFORNIA
ON
OCTOBER 26, 1961

Official Cachet - C. O. P. E. T. A.



M. Carl Goetz,
St. Joseph Museum,
11th & Charles Streets,
St. Joseph,
Missouri.



RUSSELL
MAJORS
AND
WADDELL
FOUNDERS

1860 PONY EXPRESS 1960



FIRST DAY OF ISSUE

HANNIBAL-ST. JOSEPH R.R.

100th anniversary
THE PONY EXPRESS

FROM RAILS' END AT SAINT JOSEPH, MISSOURI TO TRAIL'S END AT SACRAMENTO, CALIFORNIA IN TEN DAYS!

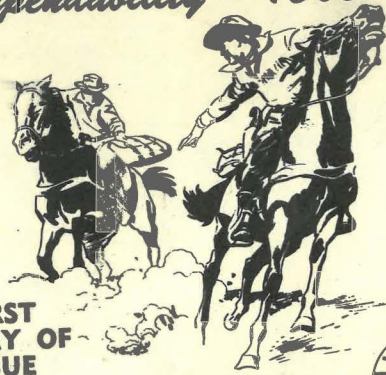
ORIGINAL
PONY EXPRESS
April 3
ST. JOSEPH, MO.
STAMP



FIRST DAY OF ISSUE



THE PONY EXPRESS
Dependability - 1860



FIRST DAY OF ISSUE

DANNEN FEEDS
Dependability - 1960

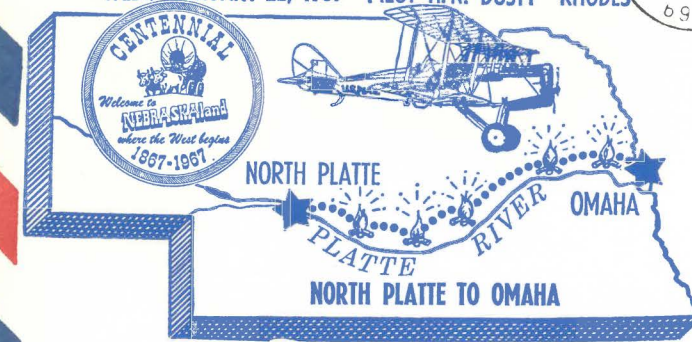


FIRST DAY OF ISSUE



Mr. & Mrs. Claude Stephenson
3134 Edmond
St. Joseph, Missouri

CENTENNIAL RE-ENACTMENT
WED., FEBRUARY 22, 1967 -- PILOT H. N. "DUSTY" RHODES

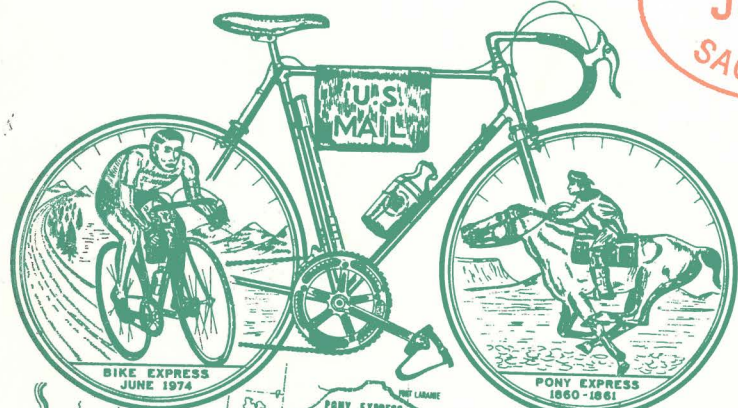


FIRST NIGHT AIR MAIL FLIGHT
★★ FEBRUARY 22, 1921 -- PILOT JACK KNIGHT ★★



Mr & Mrs Don Renyolds
3108 Edmond
St. Joseph, Missouri

**PONY EXPRESS
RE-ENACTMENT
BY BICYCLE**



BIKE EXPRESS JUNE 1974
PONY EXPRESS 1860-1861
THIS COVER WAS CARRIED ENTIRELY BY BICYCLE FROM SACRAMENTO, CALIF. TO ST. JOSEPH, MISSOURI
THE CENTRAL OVERLAND TRAIL

BIKE EXPRESS
JUNE 7
SACRAMENTO
SACRAMENTO, CA
to ST. JOSEPH, MO
SACRAMENTO, CA
JUNE 7
1974
95813
SAINT JOSEPH, MO
JUN 11
1974
USPO

100th anniversary
THE PONY EXPRESS
FROM RAILS' END AT SAINT JOSEPH, MISSOURI TO TRAIL'S END AT SACRAMENTO, CALIFORNIA IN TEN DAYS!
1860
ORIGINAL
PONY EXPRESS
April 3
ST. JOSEPH, MO
STAMP

SACRAMENTO
JUL 19
9-AM
1960
CALIF.
FOUNDERS
• RUSSELL
• MAJORS
• WADDELL
SACRAMENTO, CALIF. • ST. JOSEPH, MO.
1860-1960 PONY EXPRESS
FIRST DAY OF ISSUE

WELLS FARGO - HOLLADAY CENTENNIAL
1861 — Operators Overland Pony Express — 1961
Mr. Don Reynolds, Curator,
Pony Express Stables Museum,
St. Joseph, Missouri.

NATIONAL PONY EXPRESS ASSOCIATION
(INCORPORATED)
POST OFFICE BOX 236
POLLOCK PINES, CALIFORNIA 95725
PONY EXPRESS
SACRAMENTO TO ST. JOSEPH
1981
JUNE 20
1981
ST. JOSEPH, MO.
Don Reynolds
3108 Edmond St
St Joseph MO
64501
121st YEAR COMMEMORATION — ENTIRE ROUTE RE-RUN
A National Organization to Re-establish, Identify and Re-ride the Historical Pony Express Trail



NEBRASKA STATEHOOD
1867-1967
COTTEHNBURG, NB
AUG 16
PM
1967
Don L. Reynolds
3108 Edmond St.
St. Joseph, Mo. 64501

NATIONAL PONY EXPRESS ASSOCIATION
(INCORPORATED)
POST OFFICE BOX 236
POLLOCK PINES, CALIFORNIA 95726
PONY EXPRESS
ST. JOSEPH TO SACRAMENTO
JULY 4
1980
Don L. Reynolds
3108 Edmond
St. Joseph
Missouri
64501
120th YEAR COMMEMORATION — ENTIRE ROUTE RE-RUN
A National Organization to Re-establish, Identify and Re-ride the Historical Pony Express Trail